

QUICK-START GUIDE:

DANBY APP FOR YOUR DANBY SMART APPLIANCE

1 INSTALL APP

Download the 'Danby' app to your smart mobile device from either:

- Apple App Store
- Android Google Play



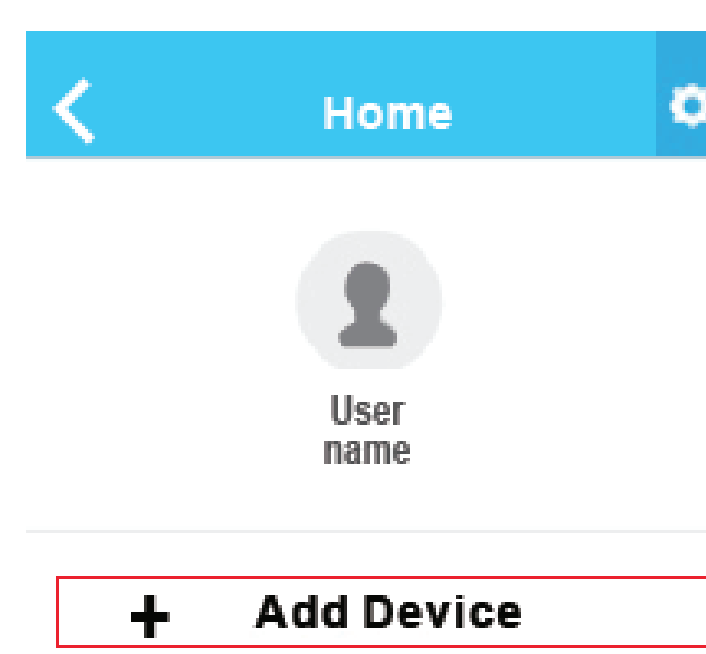
2 USER REGISTRATION AND NETWORK CONFIGURATION

A. Ensure that you are connected to the wireless network before you begin the installation process

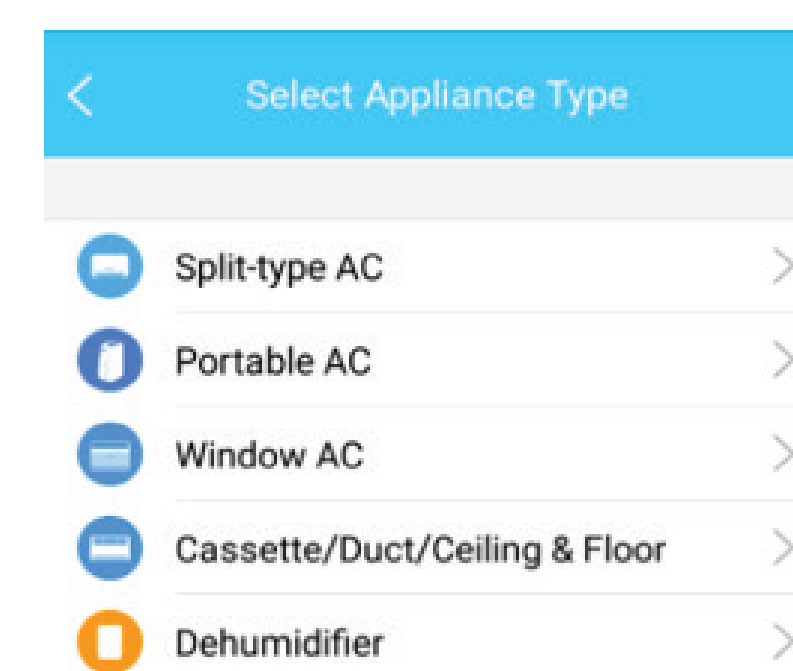
B. Launch the 'Danby' app and create an account

- Activate your account through email

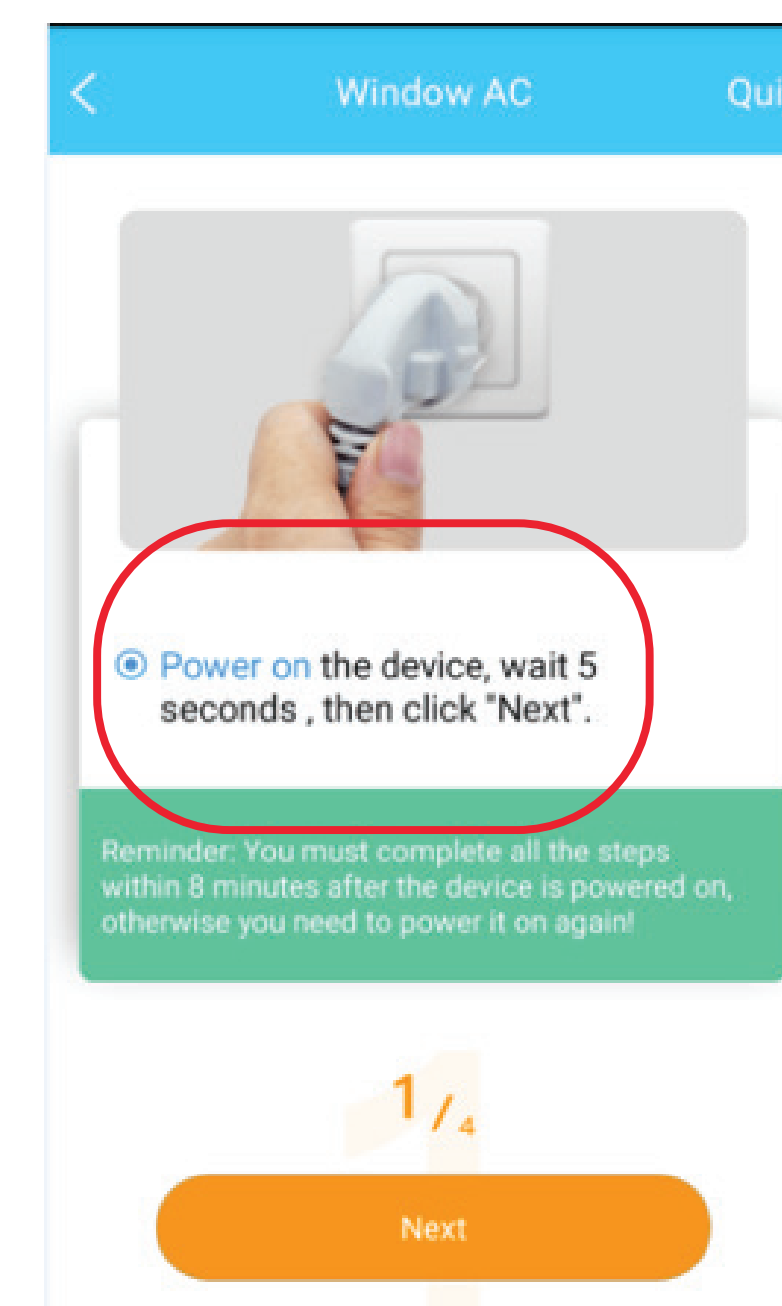
C. Open the 'Danby' app and choose 'Add Device'



D. Choose your appliance type

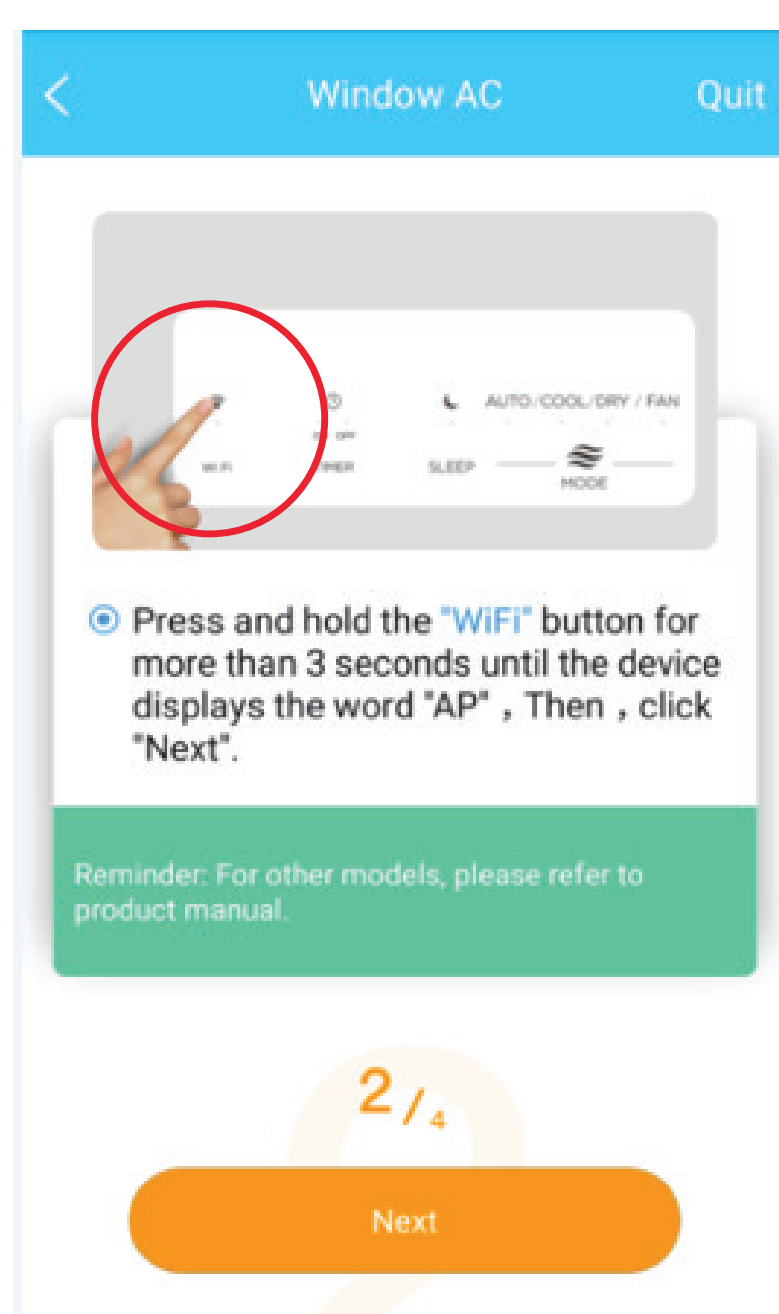


E. Power on device and wait 5 seconds



F. Press and hold 'WiFi' button on the device

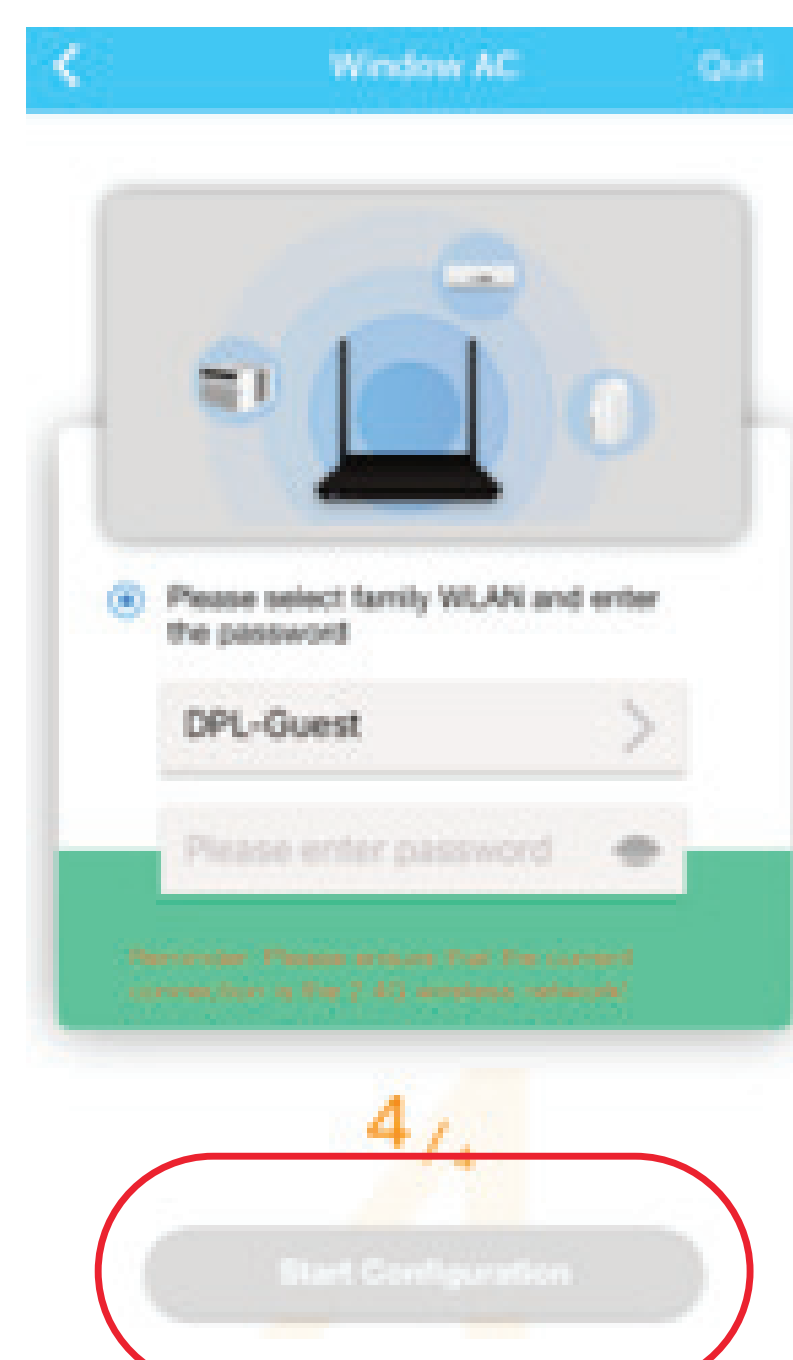
- For units without a dedicated WiFi button, on the remote control press 'Light' button 7 times for the 'AP' symbol to appear on the display panel.



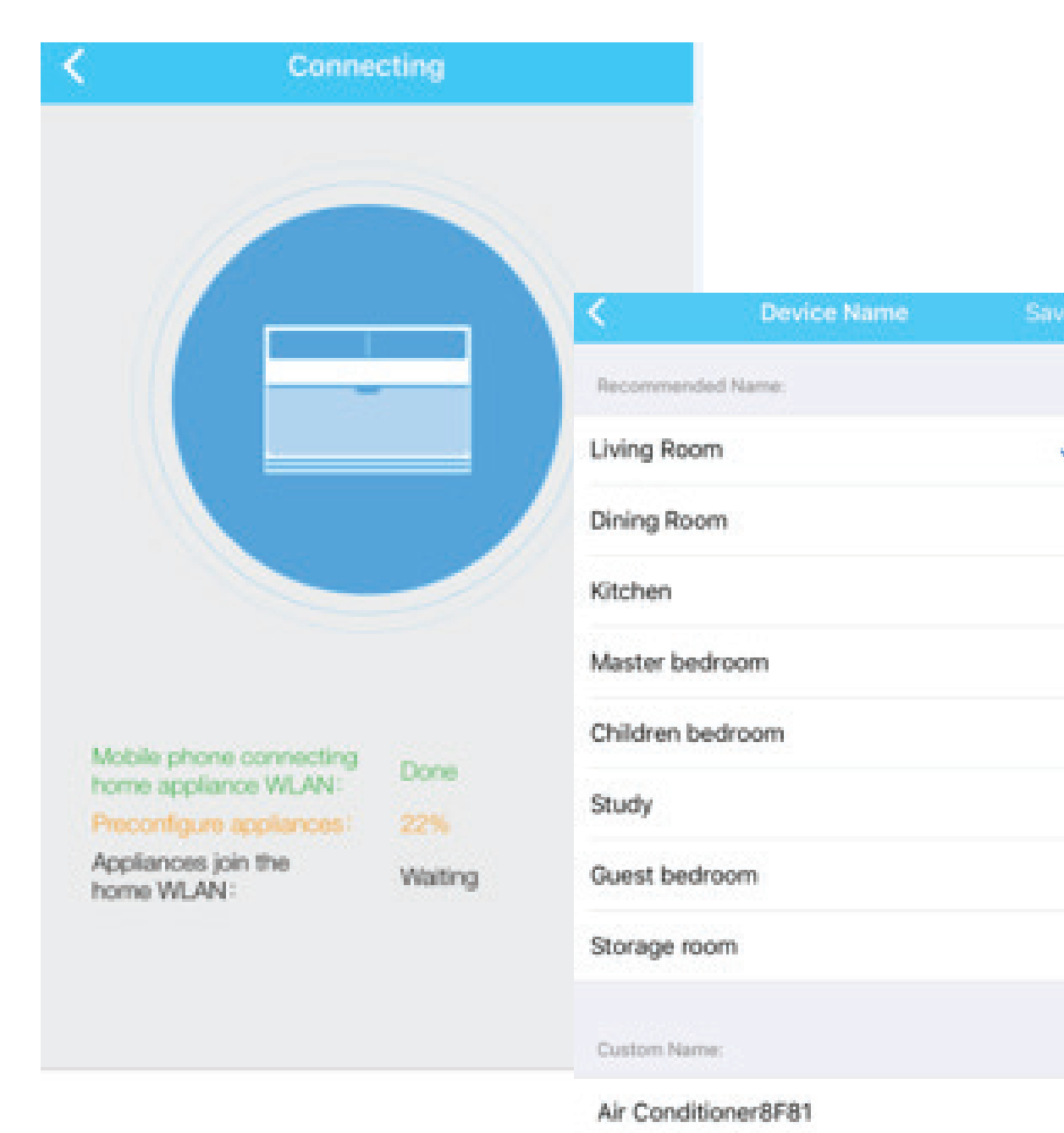
G. Go to WiFi settings on the phone and select the 'net_ac_XXX'



H. Return to app and enter home WiFi password

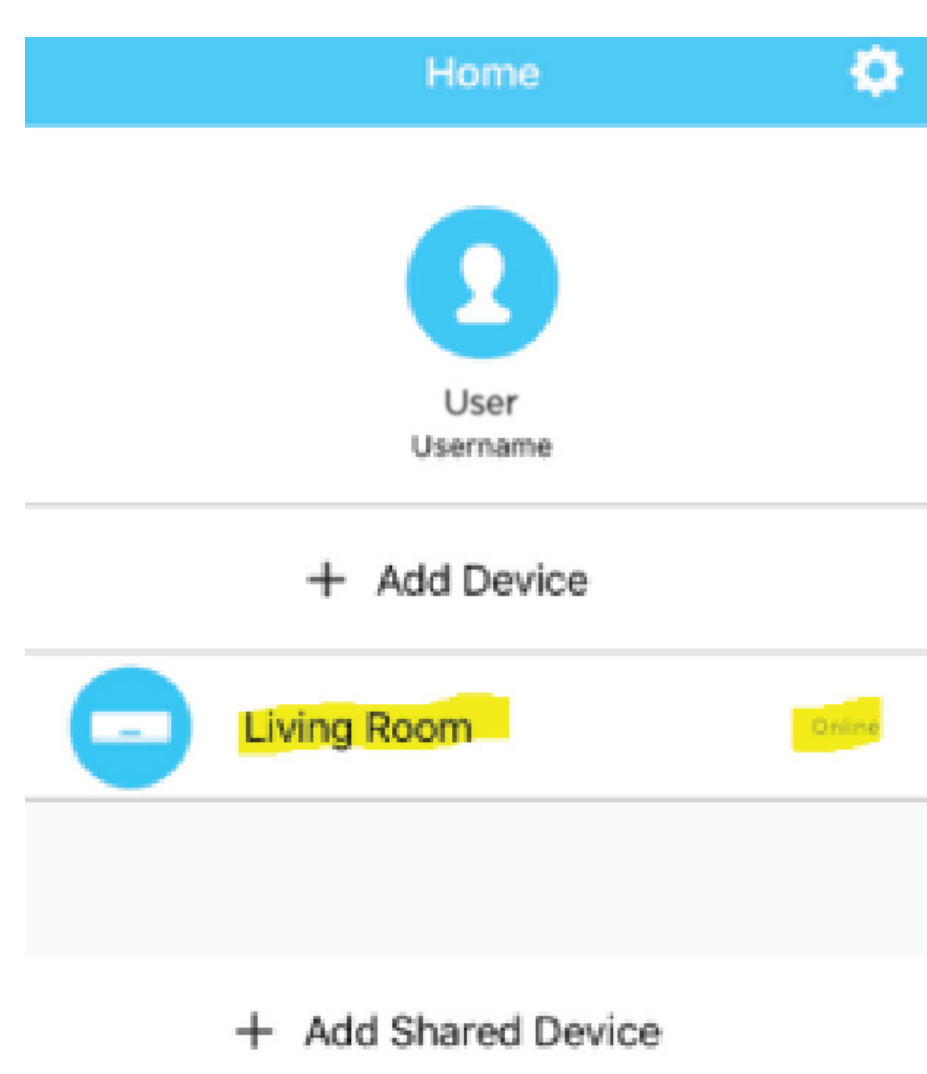


I. Installation progress screen. Choose device name and click 'Save'

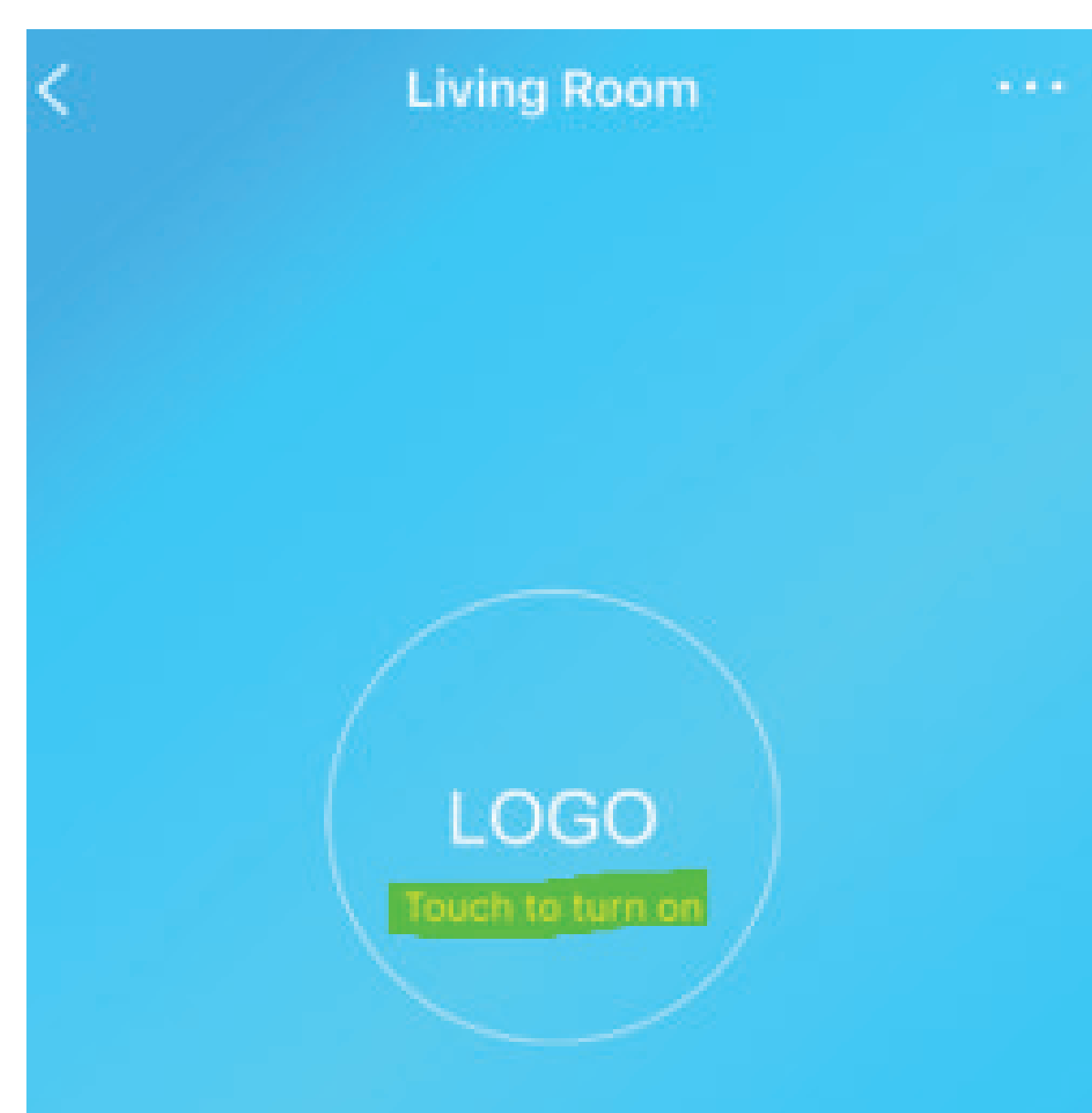


3 USING THE APP

A. Choose the device you wish to adjust



B. Turn on the device



C. Enjoy the convenience that comes with remote access to your device

