

QUICK-START GUIDE:

NETHOME PLUS APP FOR YOUR DANBY SMART APPLIANCE

STEP 1 INSTALL APP

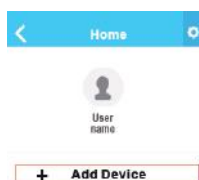
Download the 'NetHome Plus' app to your smart mobile device from either:

- Apple app store
- Android Google play

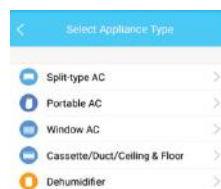


STEP 2 USER REGISTRATION AND NETWORK CONFIGURATION

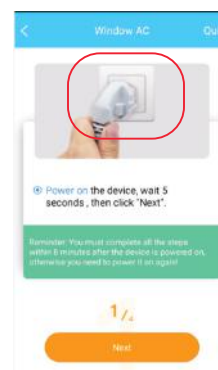
- A.** Ensure that you are connected to the wireless network before you begin the installation process
- B.** Launch the 'NetHome Plus' app and create an account
- Activate your account through email
- C.** Open the 'NetHome Plus' app and choose 'Add Device'



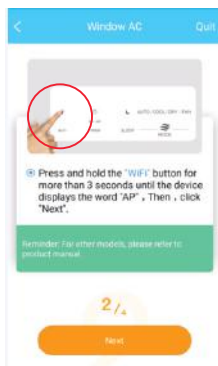
- D.** Choose your appliance type



- E.** Power on device and wait 5 seconds



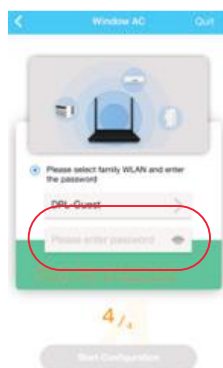
- F.** Press and hold 'WiFi' button on the device
- For Window AC's press and hold "Mode" instead



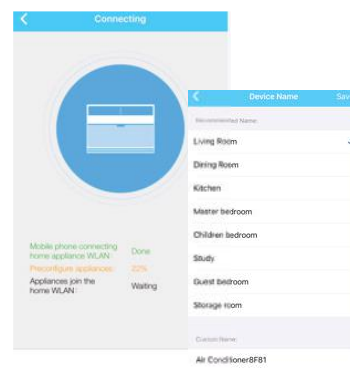
- G.** In the app, Connect to the device WLAN
- Network: 'net_ac_XXXX'
 - Password: '12345678'



- H.** Return to app and enter home WiFi password

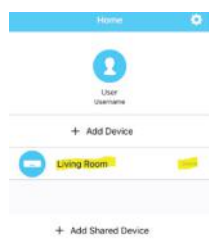


- I.** Installation progress screen
- Choose device name and click 'Save'

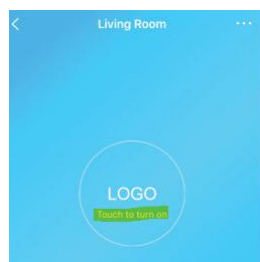


STEP 3 USING THE APP

- A.** Choose the device you wish to adjust



- B.** Turn on the device



- C.** Enjoy the convenience that comes with remote access to your device



Danby
Do the right thing.

Call us 1-800-263-2629
consumerservice@danby.com